

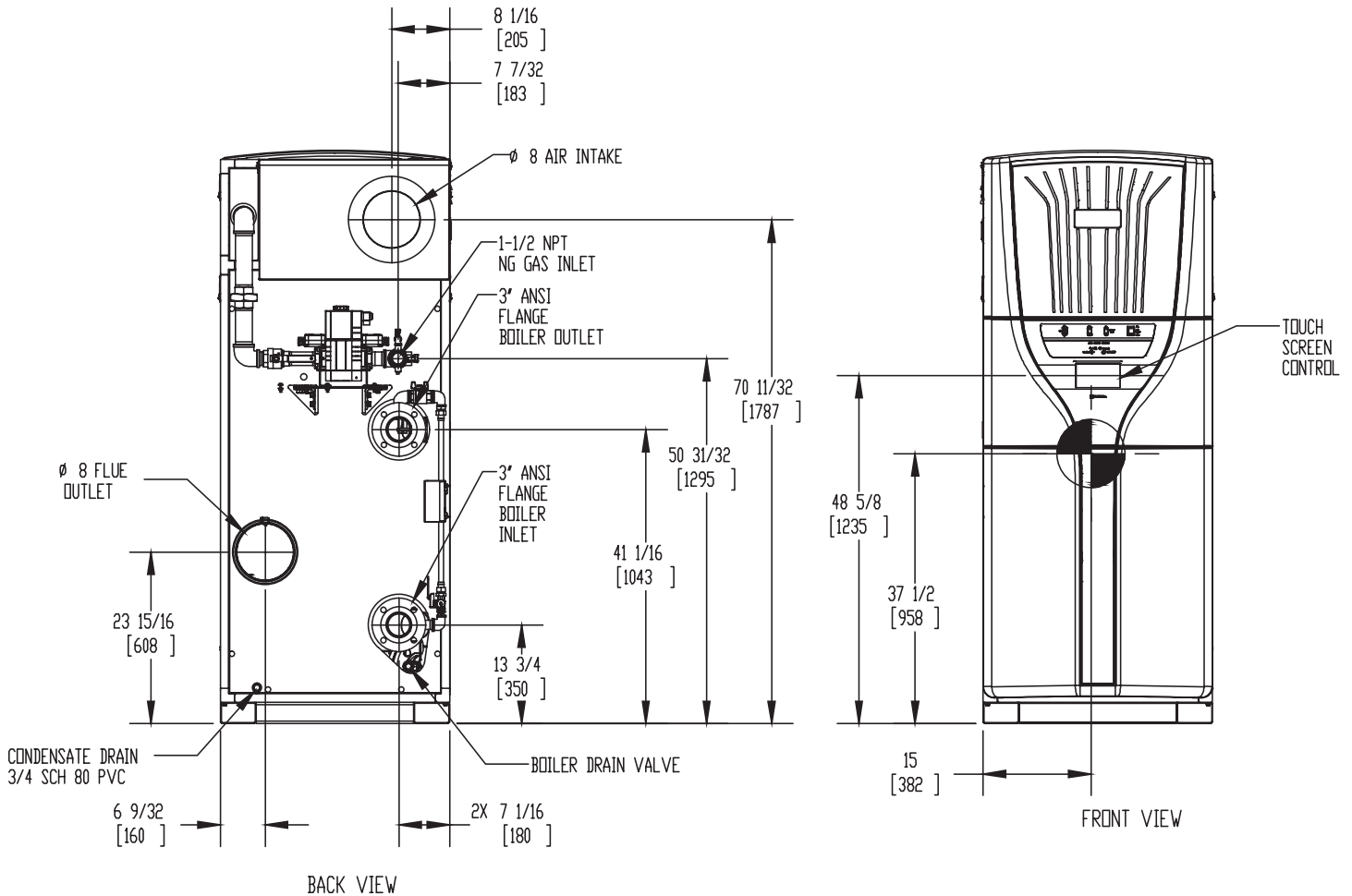
# FlexCore 3000

**Category II or Category IV Appliance**  
(see Installation and Operation Manual for venting information)


## CODE OPTIONS

CSD-1

STANDARD



### Notes:

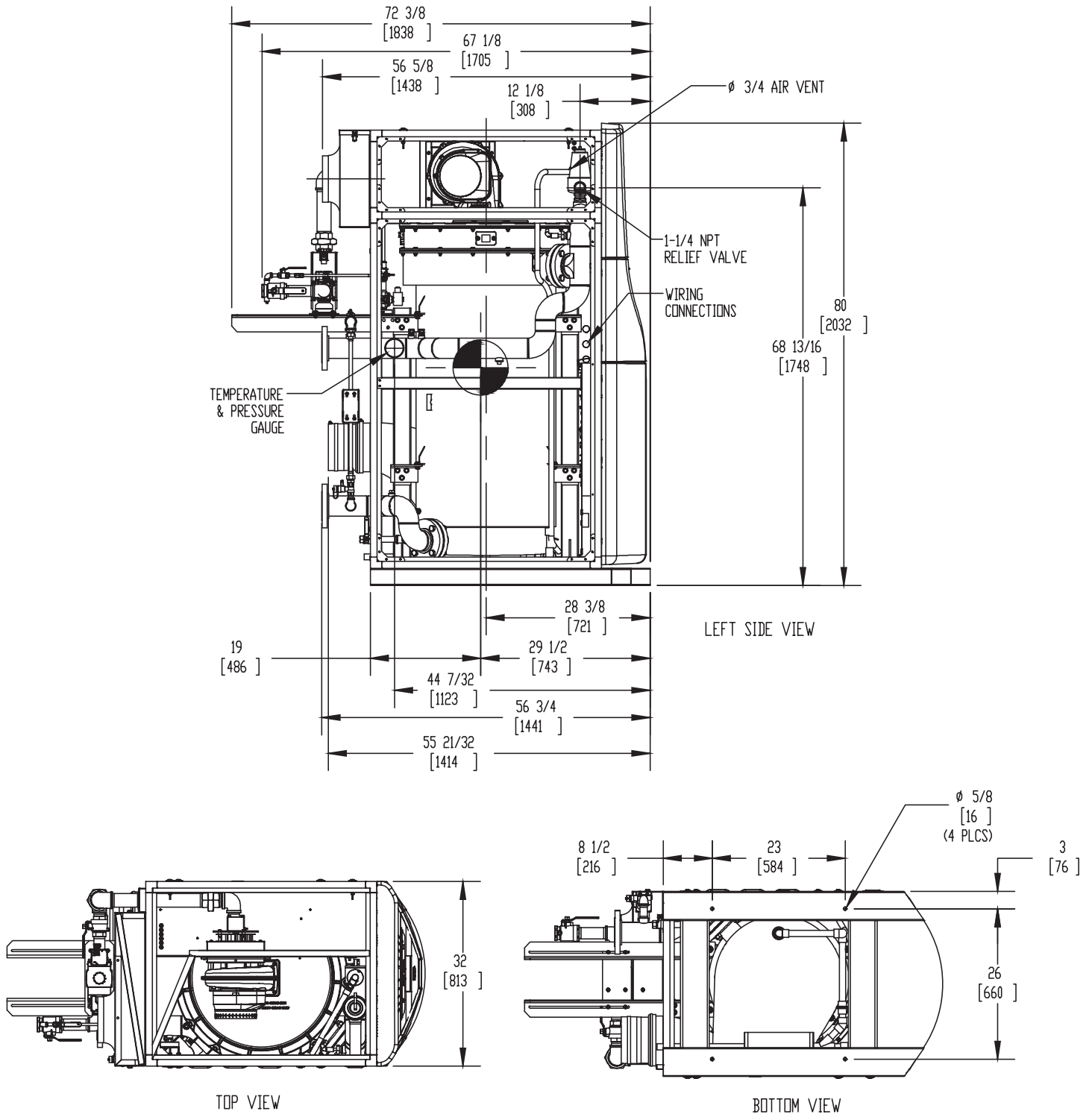
1. Dimensions are approximate and should not be used to "rough-in" equipment.
2. Dimensions are subject to change without notice.
3. All dimensions are in inches (mm).
4.  Symbol indicates center of gravity.

# FlexCore 3000


**Category II or Category IV Appliance**  
(see Installation and Operation Manual for venting information)

## CODE OPTIONS

CSD-1	STANDARD
-------	----------



### Notes:

1. Dimensions are approximate and should not be used to "rough-in" equipment.
2. Dimensions are subject to change without notice.
3. All dimensions are in inches (mm).
4.  Symbol indicates center of gravity.

## BOILER CERTIFIED RATINGS & CAPACITIES

<b>Fuel Type</b>	Natural Gas	<b>Boiler FLA</b>	11.0*
<b>Input BTU/hr.</b>	3,000,000 / 879 KW	<b>Boiler HP</b>	86.8
<b>Output BTU/hr.</b>	2,904,000 / 851KW	<b>Min. Gas Pressure Required</b>	3" W.C.
<b>Electrical Requirements</b>	230 VAC/60 Hz/3PH	<b>Max. Gas Pressure Allowed</b>	14" W.C.
		<b>Operating Weight</b>	2425 lbs / 1100 kg

## BOILER TRIM & CONTROLS

<b>Main Gas Valve</b>	Dungs MBC	<b>Air Switch</b>	Huba
<b>Firing Valve</b>	1 1/2" Apollo	<b>Flow Sensor</b>	SIKA
<b>Ignition Control</b>	Honeywell RM7895C	<b>Blocked Flue Switch</b>	Cleveland NS2
<b>Operating Control</b>	HeatNet®	<b>Blower Motor</b>	Ametek
<b>High Limit</b>	Jumo	<b>L.W.C.O.</b>	800
<b>Main Ball Valve</b>	1 1/2" Apollo	<b>Relief Valve</b>	1-1/4" x 1-1/2" set @ 50 psi
<b>Pilot Cock</b>	1/4"	<b>Pilot Regulator</b>	White-Rodgers

## A.S.M.E.

<b>ASME Sect IV Fire Side Htg Surface</b>	235 Sq. Ft. / 21.8 Sq. M.	<b>Design Data</b>	Max. 160 psig & 210°F
<b>ASME Sect IV Water Side Htg Surface</b>	244 Sq. Ft. / 22.6 Sq. M.	<b>Water Volume</b>	56 gal / 210 liters
<b>CV. GPM (1PSID)</b>	132		


\* Add circulator amps.

## BOILER TEMPERATURE RISE / PRESSURE DROP (Based on Full Input)

20°F / 11.1°C				40°F / 22.2°C				60°F / 33.3°C				80°F / 44.4°C				100°F / 55.5°C			
Flow Rate		Pressure Drop		Flow Rate		Pressure Drop		Flow Rate		Pressure Drop		Flow Rate		Pressure Drop		Flow Rate		Pressure Drop	
GPM	L/s	Ft	kPa	GPM	L/s	Ft	kPa	GPM	L/s	Ft	kPa	GPM	L/s	Ft	kPa	GPM	L/s	Ft	kPa
290.5	18.3	11.2	33.4	145.3	9.1	2.8	8.4	96.8	6.1	1.2	3.5	72.6	4.5	.7	2.0	58.1	3.6	.4	1.1

Flow GPM				Temp. Rise** (°F)				Vent Length (Equiv. Ft.)				Air Inlet Length (Equiv. Ft.)			
Min		Max		Min		Max		Min		Max		Min		Max	
58.1		290.5		20		100		6		100		0		100	

\*\* Min/Max delta t reflects boiler operation at full input. For applications requiring operation above/below these parameters please consult factory.

<b>REP FIRM</b>	_____	<div style="background-color: black; color: white; padding: 10px; text-align: center;"> <h1 style="margin: 0;">FlexCore 3000</h1> <p style="margin: 5px 0;"><b>Category II or Category IV Appliance</b></p> <p style="margin: 0;">(see Installation and Operation Manual for venting information)</p> </div> <div style="text-align: center; margin-top: 20px;">  <p><b>RBI</b>® RELIABLE. BOLD. INNOVATIVE.</p> </div>
<b>SUBMITTED BY</b>	_____	
<b>JOB NAME</b>	_____	
<b>ARCHITECT</b>	_____	
<b>ENGINEER</b>	_____	
<b>CONTRACTOR</b>	_____	
<b>DATE</b>	_____	<p>A Division of Mestek, Inc. Westfield, MA 01085 (413) 564-5515</p>